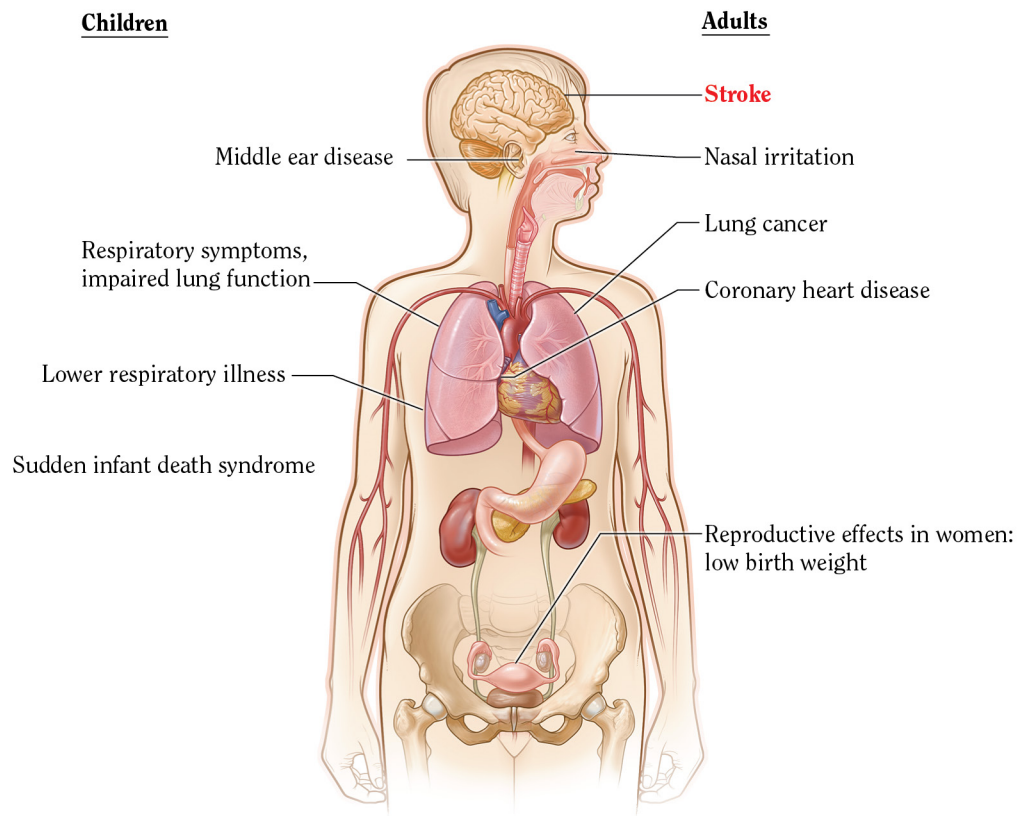


**Figure 1.1B The health consequences causally linked to exposure to secondhand smoke**



Source: USDHHS 2004, 2006.

Note: The condition in **red** is a new disease that has been causally linked to smoking in this report.

the evidence. Understanding of mechanisms, as laid out in the 2010 report, *How Tobacco Smoke Causes Disease: The Biology and Behavioral Basis for Smoking-Attributable Disease*, is also (USDHHS 2010b). Active smoking and exposure to secondhand smoke are covered in the same chapters. Section 3 “Tracking and Ending the Epidemic” includes a descriptive chapter on the patterns of smoking, a chapter on the impact of the tobacco control environment on smoking since 1964, and additional chapters providing estimates of premature deaths that are avoidable.

The final chapter “A Vision for the Ending the Tobacco Epidemic” outlines broad strategies and potential courses of action for tobacco control in the future.

Each section within the chapters on the health consequences of smoking (Chapters 6 – 11) is accompanied by evidence tables detailing the studies that were used to evaluate the evidence to assess causality. A supplement to this report is provided that contains these tables. The tables included in the supplement are indicated with an “S” where they are called out in the text.